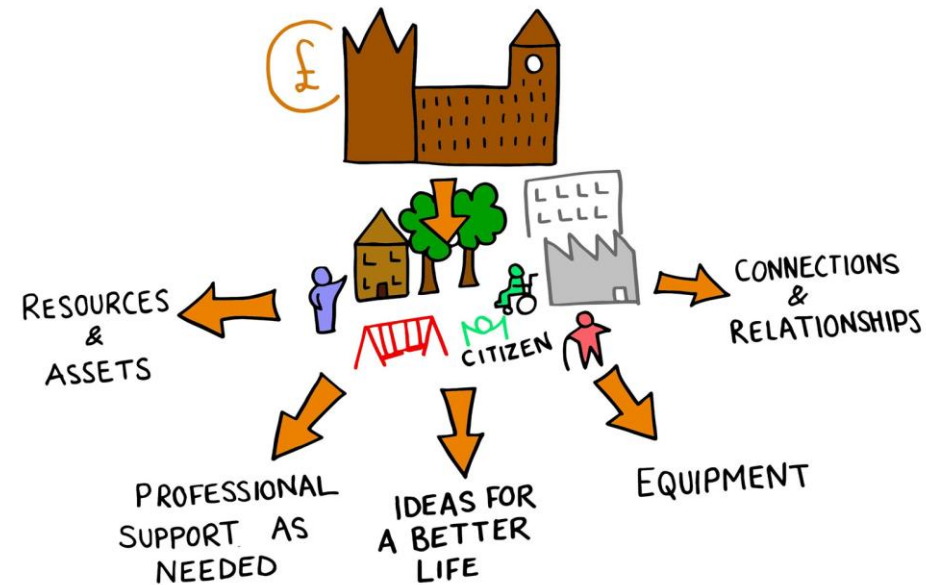


Support Brokerage & Commissioning



What we will cover

- Defining Support Brokerage
- Commissioning options for Support Brokerage
- Developing flexible specification
- Relevant outcome frameworks
- Governance considerations
- Measuring the difference made
- Building a sustainable approach
- The function of the Support Brokerage Network
- Questions

Defining Support Brokerage

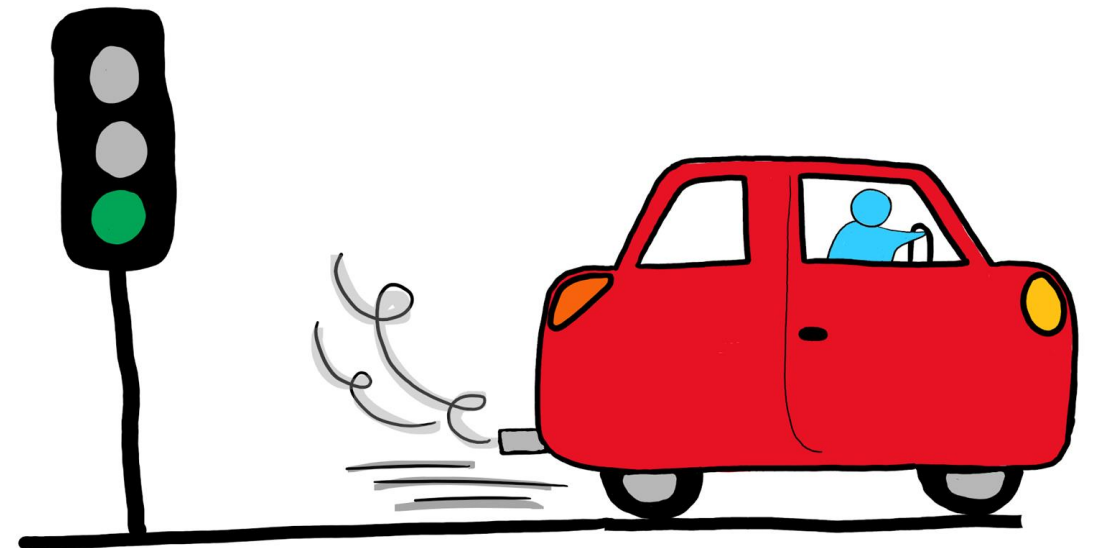
- Independent & accountable to the person
- Starts with the person and 'What matters' conversation, focus on strengths
- Person Centred planning tools and information gathering
- Explores resources and opportunities which reside within the community and the person's relational networks
- Explores how Local Authority funding and other sources of funding can be utilised to meet outcomes in a personalised way
- Only considers services once exploration of above has taken place
- Technical skills: Navigating the social care process & legal frameworks; Exploring resources; Developing the Support Plan; Building circles of support/personal support networks; Creating & costing the budget

The Commissioning Options

- Spot Contracts
- Dynamic Purchasing System
- Include in the Personal Budget
- Individual Service Fund
- Develop a block contract for service delivery

Developing a flexible specification

- Person in the driving seat
- Broker is accountable to the person
- 5 stages:
 - Listen
 - Explore
 - Connect
 - Implement
 - Review



Outcomes- Legislation

Care Act

- Social and Economic Wellbeing
- Contribution to society
- Participation in work, education and volunteering
- Personal Dignity
- Control by the individual in their day to day life



Outcome Frameworks

Integrated Commissioning for Better outcomes

Domain 2 standard 1: People are at the heart of commissioning.

Domain 2 standard 2: A place based approach

Domain 2 standard 3: Building active partnerships

Domain 3 standard 4: There is sufficient supply



Integrated
commissioning
for better
outcomes

A commissioning
framework



Outcome Frameworks

Reach Standards



- I have my own house
- I have good support
- I get help to make changes in my life



TLAP - Making It Real indicators

- 'I know how much is available to me to meet my care and support needs'
- 'I can decide how it is used'
- 'I have care and support that enables me to live as I want to, seeing me as a unique person with skills, strengths and personal goals'

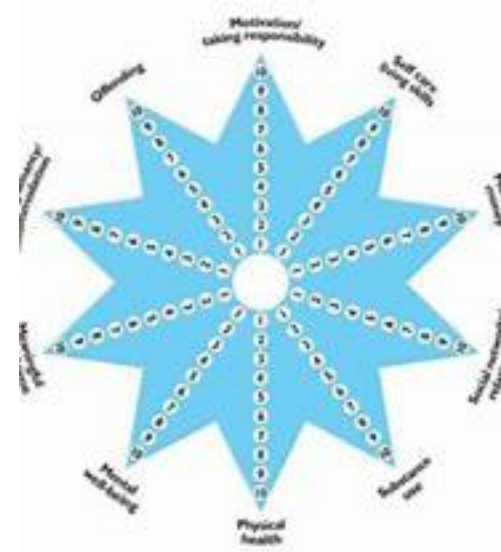
Outcome Frameworks

Independent Living Outcomes Star

Being treated with Dignity

Social Life

Meaningful Activity



Hands off My Home

The plan demonstrates the person plays a positive role in their community.

The plan shows outcomes / goals re work and activities that give satisfaction and personal fulfillment.

Outcome Frameworks

Better Lives

The person's life has more sense of direction

Support for the person is now much more effective

The person has more opportunities to do what they want to do

The person has more control over the direction of their life



Governance considerations

- Agreements
- DBS
- Insurance
- Consent to share information
- Determining capacity
- Necessary Policies and Procedures
- Reporting



Measuring Difference Made

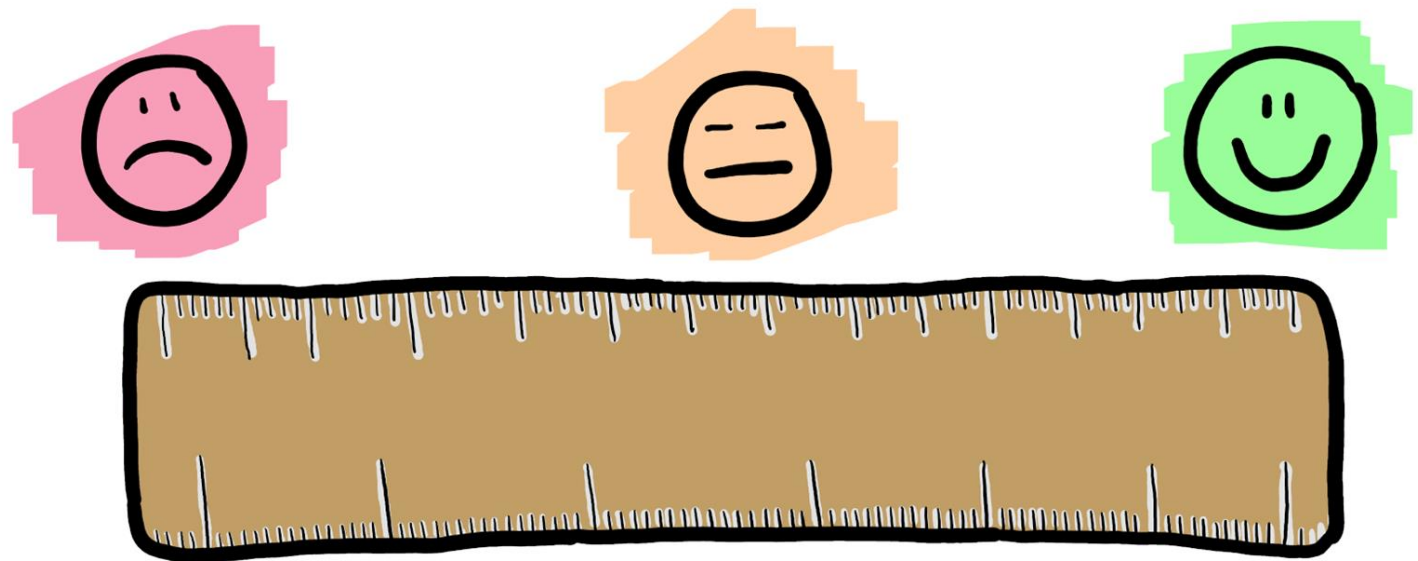
Existing outcomes frameworks

Attributing the change

Self Directed outcomes

Ownership of the story

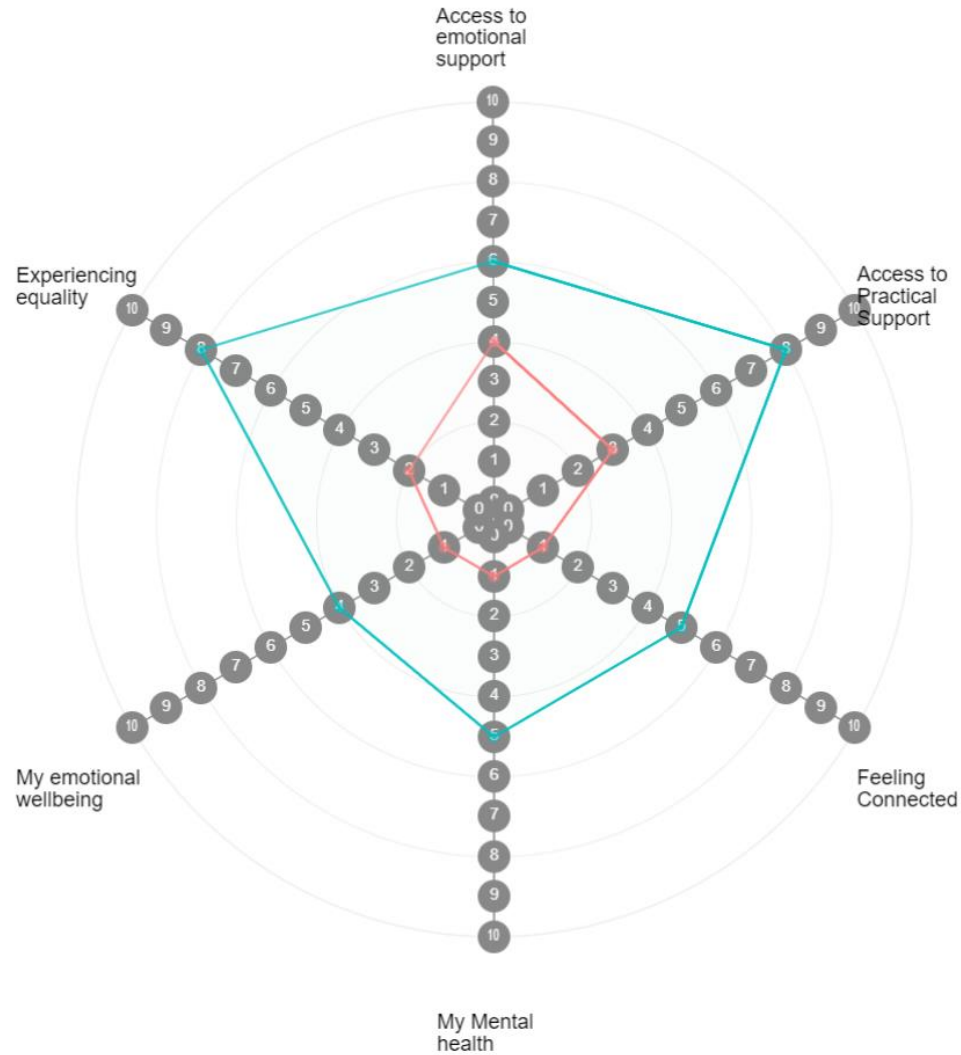
Consistency in approach



Outcomes Measurement

Support Brokerage

Wheel of Life tool



Quality Matrix

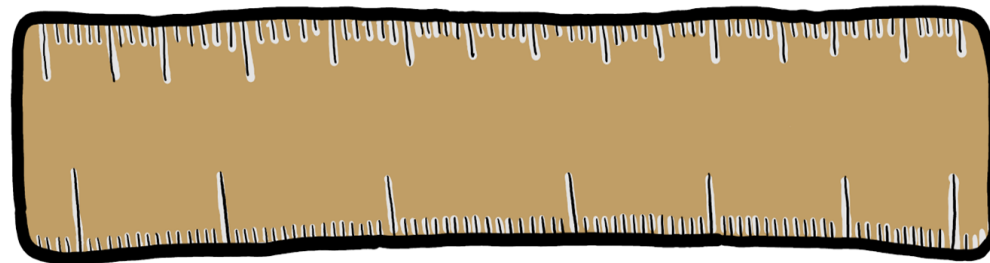


Worse	The Same									Better	
	1	2	3	4	5	6	7	8	9	10	Better
Living at home with my family, always arguing and getting frustrated all the time as we do not have the space from one another.					Living at home with family, no progress to move out into my own place.						Moving out into my own home. Having family over occasionally for tea.
No space outside to take some time to myself. No flowers and the space being very dull.					Having the family garden to go in to but its not the way I would like it to be.						Having my own garden. With colourful flowers and a bench where I can sit and have some time to myself.

Broker Evaluation Form

How good was your Support Broker?

How good was your Support Broker to have a conversation with?



Building a Sustainable Approach

Involve families and people from the start

A strong message:

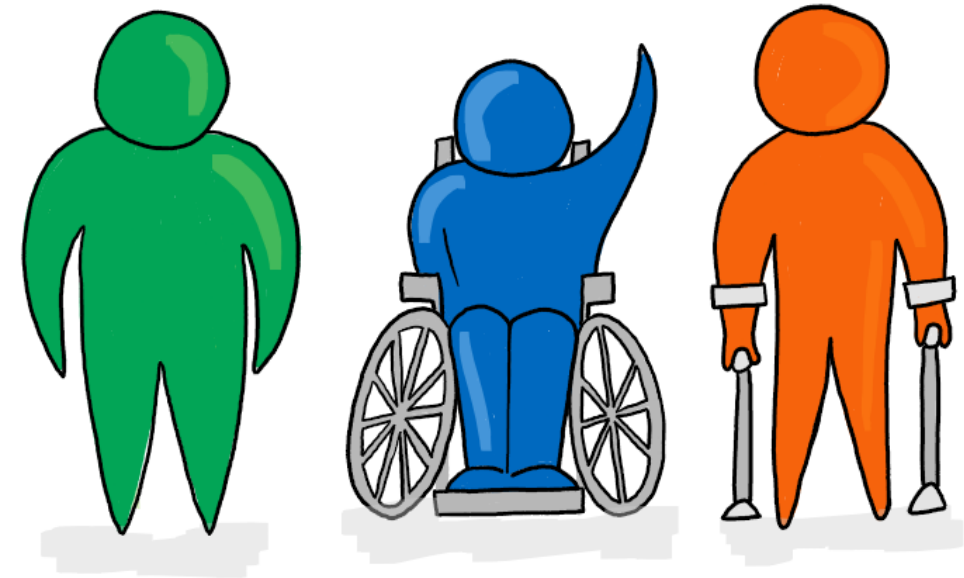
- Stories
- What good looks like
- Open up conversations about it

Flexibility in funding Support Brokerage

Paper set

Training and Mentoring

A local referral process



Support Brokerage Network

- Accredited Support Brokerage training
- Mentoring and practice support
- A community of practice
- Access to resources and papersets
- Online Support Broker profiles
- Matching Support Brokers via a referral process
- Insurance and DBS checks

www.imagineer.org.uk

Join the Mailing List



@ImagineerCiC



'Imagineer and Support Brokerage Network'



Info@imagineer.org.uk