

What we know about how technology can support people who take and manage a direct payment

Martin Walker- Policy Advisor, Think Local Act Personal (TLAP)

Kate Sibthorp - National Co-production Advisory Group

Jennifer Pearl – National Co-production Advisory Group





Who are we?

What are we about?

What do we do?

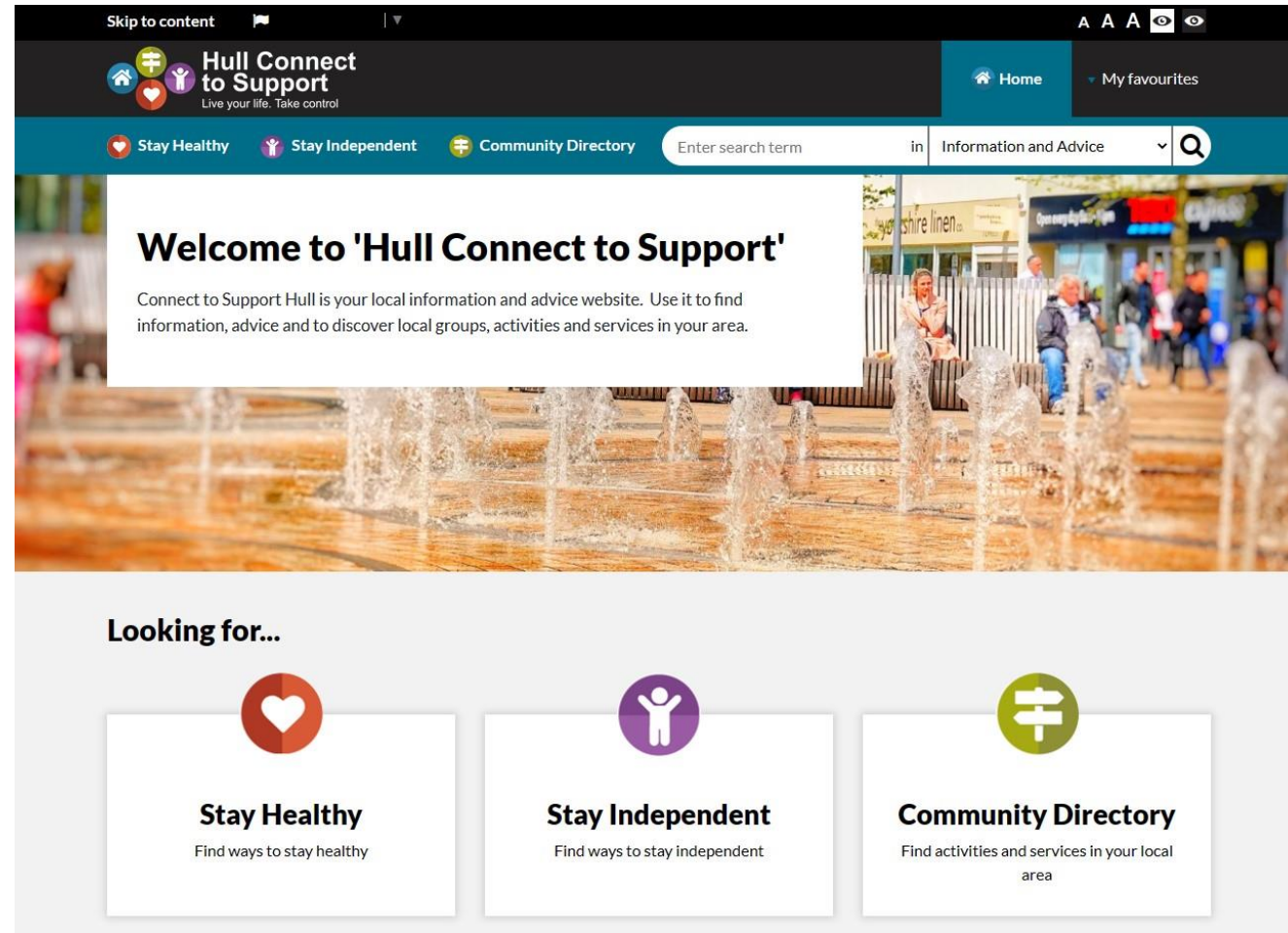


Tech and direct payments

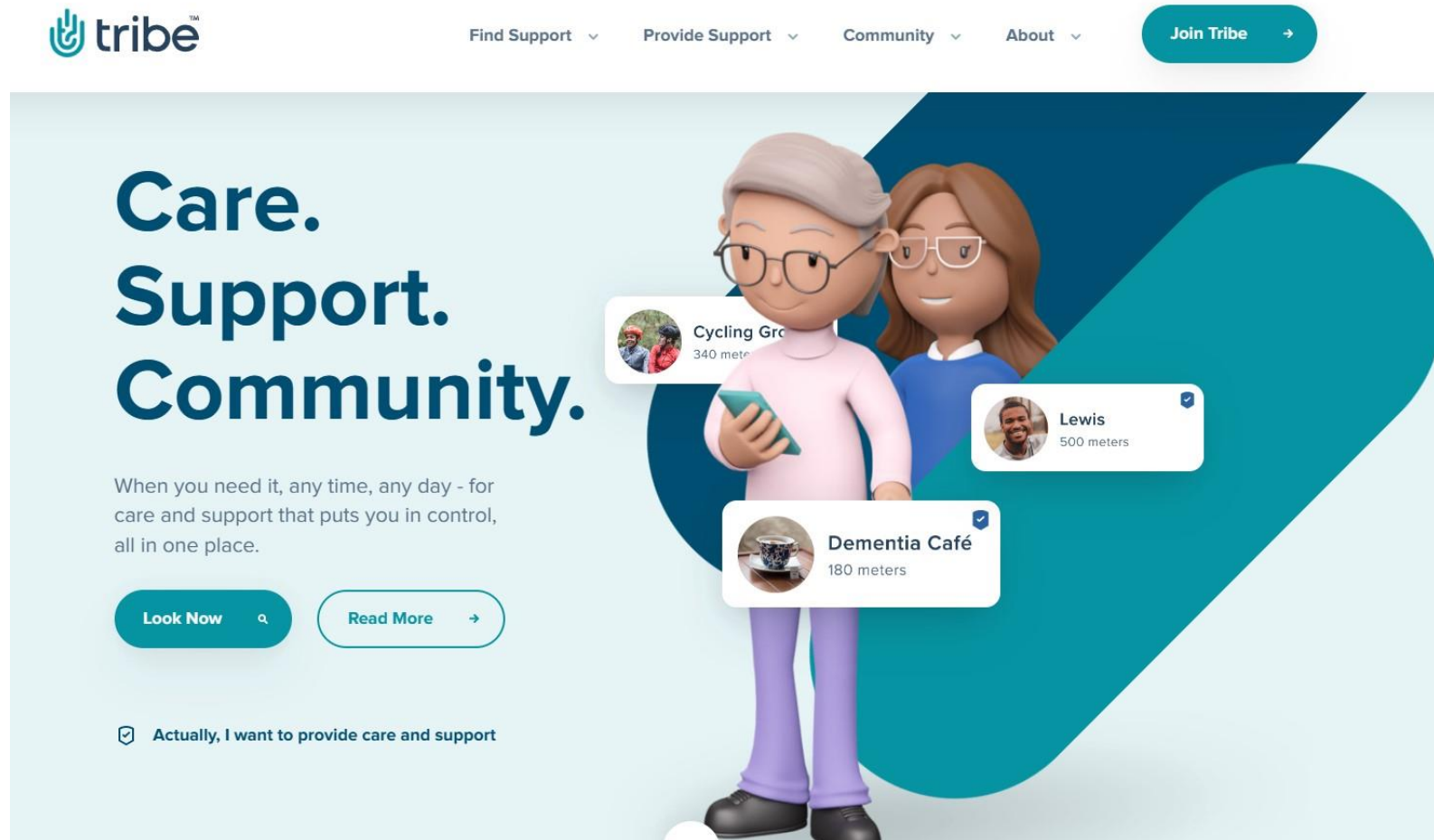
What we've seen

- Customer portals to case management systems
- Payment cards
- PA registers
- E-marketplaces
- Digitised paperwork
- Matching websites
- Blurred lines between broader use of tech to present information advice signposting and guidance
- Evolution from a starting point

Some examples



Some examples



Some examples



Main page
Accessibility
Just starting out
Templates - all
Policies - all
What's new
What is this?
Change this wiki

Tools
What links here
Related changes
Special pages
Printable version
Permanent link
Page information

Main Page

Read

View source

Search My Care Budget

Log in

[Accessibility](#) | [Just starting out](#) | [Templates](#) | [Staffing policies](#) | [What's New](#)



We have had over 5,000 users to this wiki! Thank you so much to everyone who have supported this endeavour.

As a thank you, we have removed the need to login or create an account to download any of our templates.

As a community, we are freely sharing our lived experience of running care budgets by offering a wide range of templates for download, without charge. The templates and other resources will be useful to anyone that employs Personal Assistants (PAs) or carers.

To find out more, visit our [What is this?](#) page.

- If you want an alternative to how this website is displayed, then visit our [Accessibility](#) page.
- Want to contact us? Want to share one of your documents? Then email us at contact@mycarebudget.org.
- Check out [What's New](#). We now have **96** templates and staffing policies.
- Have a look at what's popular [here](#), and your kind words about this website [here](#).

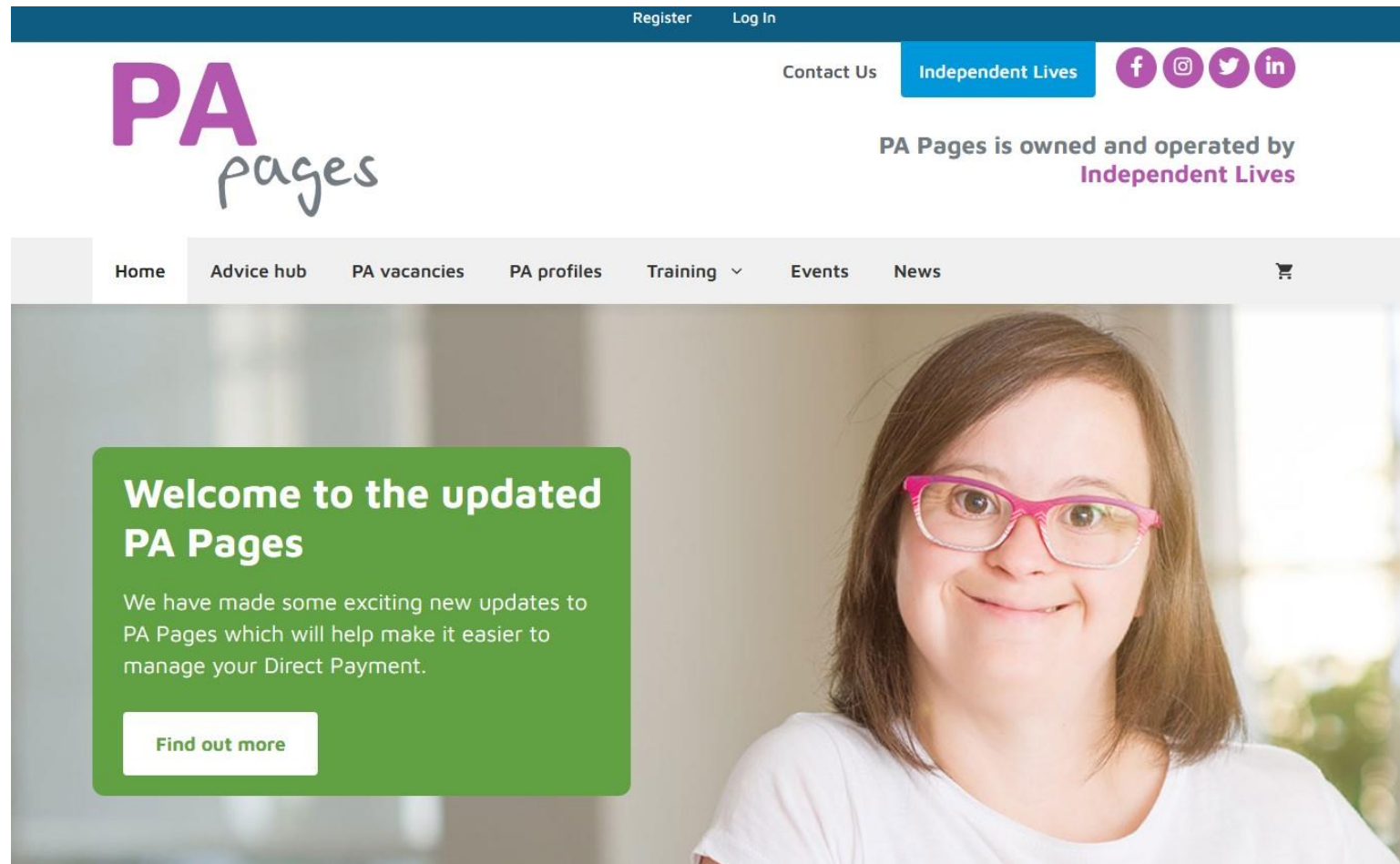
Know your way around a care budget?

For those experienced with care budgets, you can go straight to see all our [Templates](#) and [Staffing policies](#).


Take it one step at a time

Want to take it one step at a time? Try this approach,

Some examples



Some examples



Find a carer ▾ For carers ▾ For business partners


Login

Share your care needs

Find a carer your family will love

Search and message verified carers near you

Search



2 hours

Average response time

6500+

Experienced & vetted carers

3500+

people hired carers successfully

2 million+

Hours of care delivered

What and who are they for?

- What can a direct payment be used for
 - Employing personal assistants
 - Buying home care
 - Wider market with a broader view of how needs can be met
- Who benefits from direct payment tech solutions
 - Direct payment support functions
 - Audit teams
 - Finance teams
 - People ?
 - Workers ?

How much co-production has there been?

- Solutions designed by people
- Solutions designed by workers

Has co-production made a difference?

- Designs fit for purpose?
- Do people want to use them?

What's getting in the way?

- Council view of appropriate spending
- Council view about supporting flexible use of direct payments
- Council approach to auditing and reviewing spend of direct payments and whether this has met agreed outcomes in care and support plans
- People's responses to these positions and behaviours

How might we get past stuck?

Direct payments working or not working

Improving direct payment oversight

Better direct payments

Evolution of 'the market'?

Self-employed personal assistants

Micro providers

Risks and how they can be mitigated

- His majesty's revenue and customs – employment status
- Care quality commission – regulated activity and registration
- Insurance
- Approaches to mitigate risk
 - Caring with confidence – trading standards led
 - Community Catalysts

Thank you

www.thinklocalactpersonal.org.uk

Contact TLAP
info@tlap.org.uk